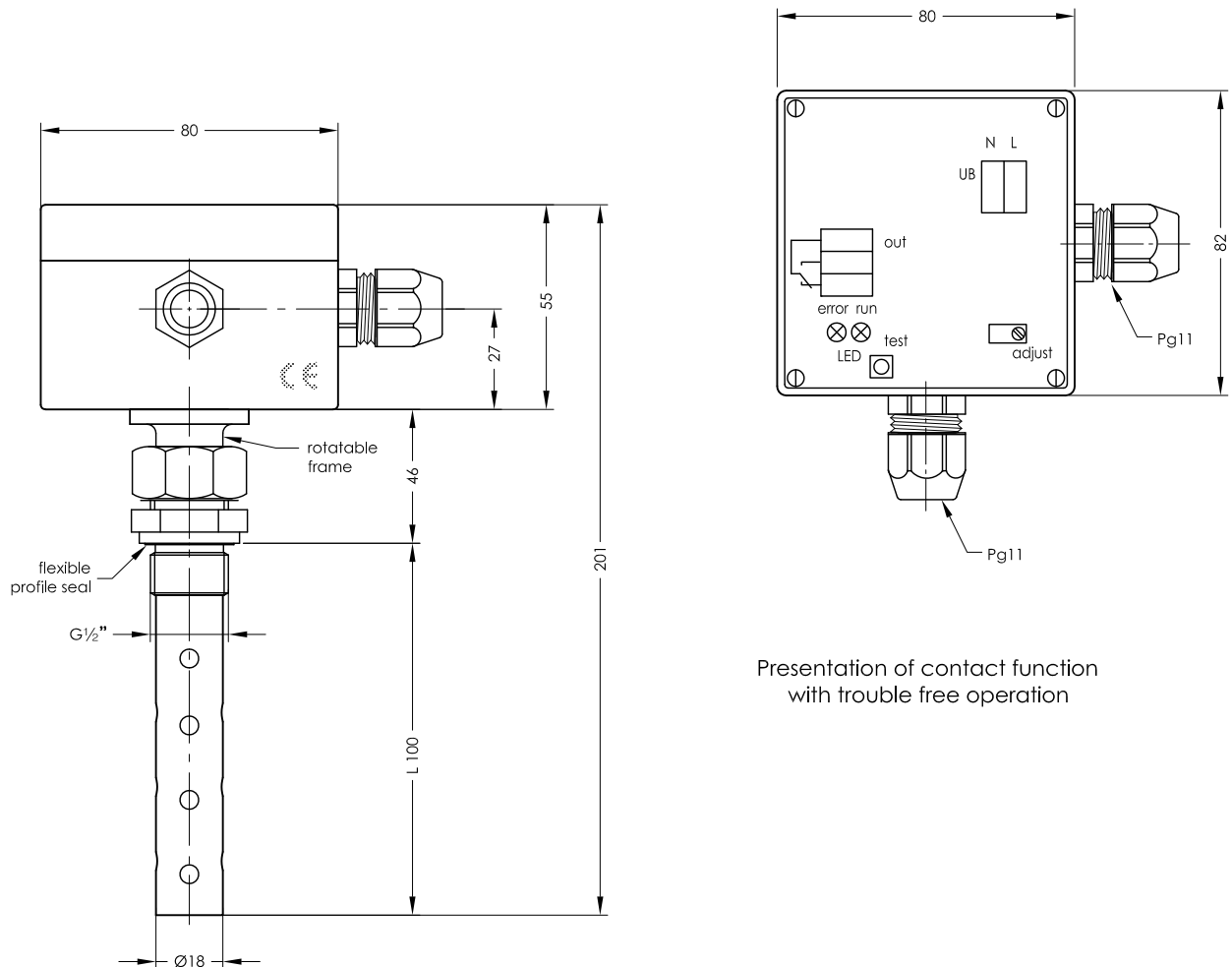


WM 1 - 230V

Water indicator

serial No. Date
WM-GB- 701 08/11



Presentation of contact function
with trouble free operation

The oil grade has to be referred when ordering

Specimen order

WM 1 - L100 - MS- 230V

Standard length 100 mm
Special lengths on request
maximum length= 2000 mm

MS 115V
VA 230V

Description

The electronic water indicator is used for the control and regulation of all kinds of liquids and is primarily employed in hydraulic and lubrication oil appliances. This type signal minimal water quantities in oil. Also oil emulsions and other liquid conductive media can be detected on requested. Calibration of device is undertaken at the works; the oil grade has to be referred when ordering.

The device operates on the capacitance principle and emits a signal on detecting a dielectric change. The sensor can be removed from the screw-in type housing by loosening a union nut or rotated through 180°. Depending on the design of the sensor, parts of less than 2% water in oil can be signalled.

Electrical connection to the supply system must be made with a shielded cable for interference-free data signal transmission for all electronic areas.

The device must only be installed by specialists.

Technical data

Operating temperature 0 to 100°C
Supply voltage 115V AC or 230V AC
Contact output 1 changeover contact 250V AC max, rupturing capacity 5A max.
Electr. connection Cable thread Pg11 + series terminals 1,5 mm²
Sensor housing Plastic EMV shielded
Protection class IP 65
Protective tube Stainless steel / brass
Switching tube Brass / stainless steel
Operating pressure 6 bar max.



GOLDAMMER
REGELUNGSTECHNIK GMBH

SCHÖLLERSHEIDER STR. 15 PHONE (49) 2104/12093
P.O.BOX 10 02 17 FAX (49) 2104/12028
D-40802 METTMANN www.Goldammer-Regelungstechnik.com
info@goldammer-regelungstechnik.com