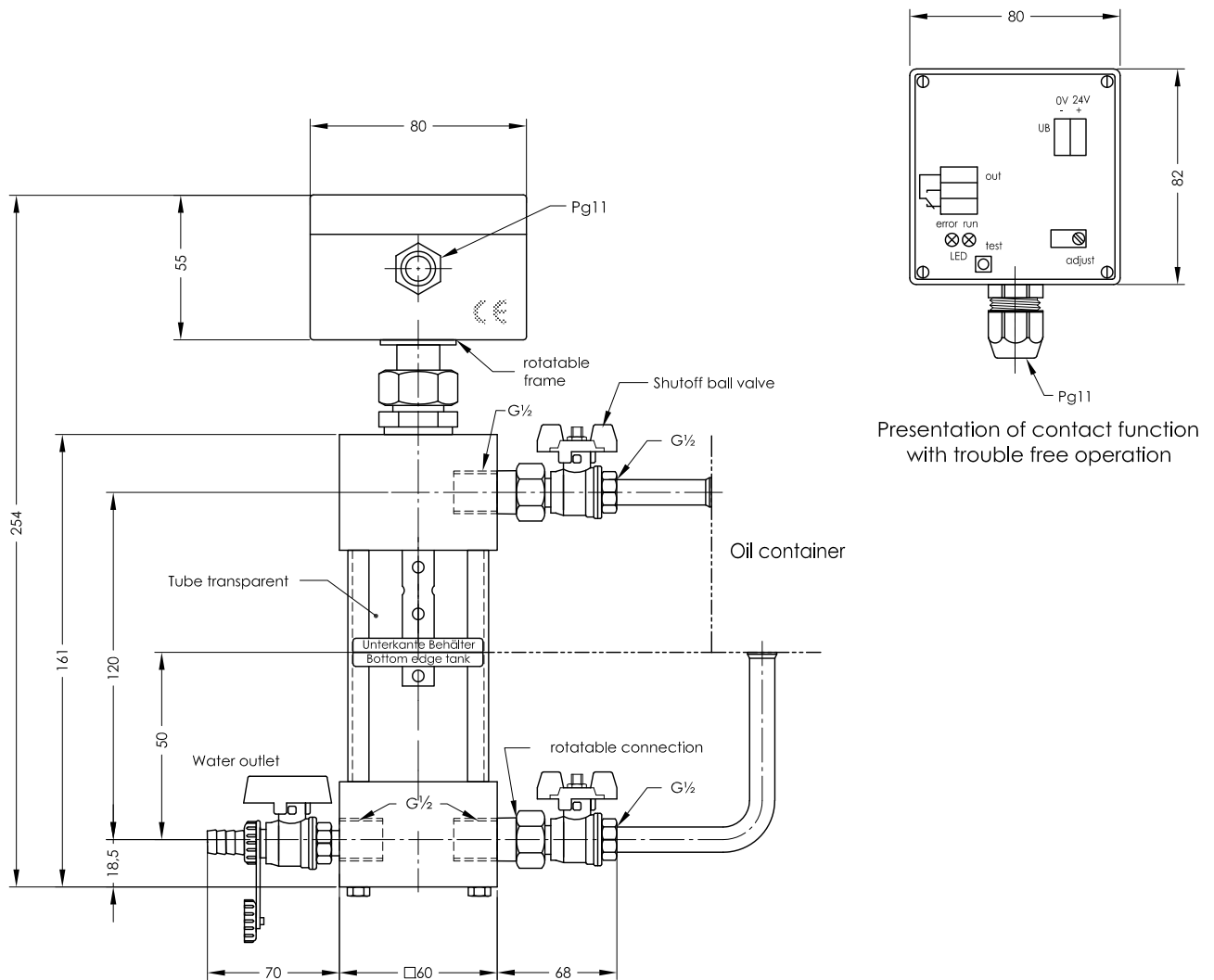


WM 1 - G - 24V DC

Water indicator for surface mounting

serial No. Date
WM-GB- 702/1 07/17



Specimen order

WM 1 - G - 0 - KU - 24V DC

0 = G 1/2" connection

KU = shutoff ball valve, mounted

The oil grade has to be referred when ordering

Description

The electronic water indicator is used for the control and regulation of all kinds of liquids and is primarily employed in hydraulic and lubrication oil appliances. This type signal minimal water quantities in oil. Also oil emulsions and other liquid conductive media can be detected on requested. Calibration of device is undertaken at the works; the oil grade has to be referred when ordering.

The device operates on the capacitance principle and emits a signal on detecting a dielectric change. The sensor can be removed from the screw-in type housing by loosening a union nut or rotated through 180°. Depending on the design of the sensor, parts of less than 2% water in oil can be signalled.

Electrical connection to the supply system must be made with a shielded cable for interference-free data signal transmission for all electronic areas.

Technical data

Operating temperature	0 to 100°C
Supply voltage	20-28V DC
Contact output	1 changeover contact 24V, rupturing capacity 5A max.
Electr. connection	Cable thread Pg11 + series terminals 1,5 mm ²
Sensor housing	Plastic EMV shielded
Protection class	IP 65
Probe	Brass
Operating pressure	6 bar max.
Adapters	Al
Shutoff valve	Brass
Power consumption	1,2 W



GOLDAMMER
REGELUNGSTECHNIK GMBH

SCHÖLLERSHEIDER STR. 15 PHONE (49) 2104/12093
P.O.BOX 10 02 17 FAX (49) 2104/12028
D-40802 METTMANN www.Goldammer-Regelungstechnik.com
Info@goldammer-regelungstechnik.com