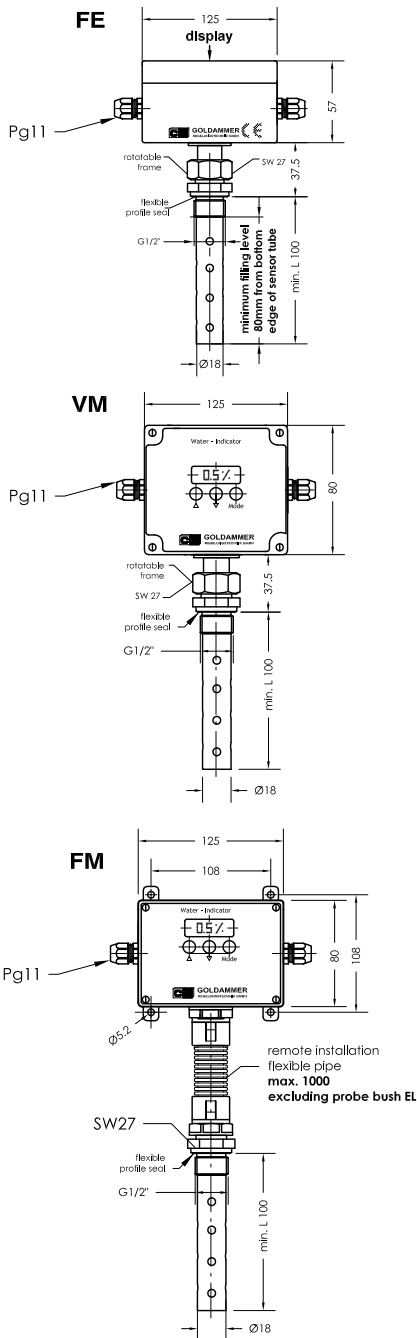


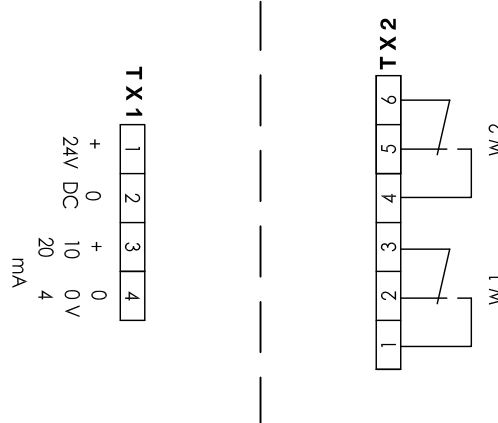
WM 12 - 1

Water indicator with display 4-20mA

serial No. Date
WM - GB- 703c 06/21



Pin assignment



The oil grade has to be referred when ordering

Specimen order

WM12-1 - G1/2 - L100 - 24V DC - 4-20mA - I - FE - VA

Connection G1/2"	Measuring range 4 - 20mA 0 - 10V
Total length (Standard length 100 mm) max. 2000mm	Contact output I = 2 contact II = 0 contacts
Operating voltage 24 DC	Construction FE= permanent installation VM= vertical installation FM = remote installation Material VA = Stainless steel

Order code

Description

The electronic water indicator with display is qualified for measurement of the absolute moisture content in hydraulic and lubrication oil appliances. The continuous monitoring of the moisture content in oil plants happens about the integrated sensor. Damage is avoided by fast detection of a water entrance. Calibration of device is undertaken at the works; the oil grade has to be referred when ordering. The evaluation for capacitive measurement takes place by a micro control system and is indicated over a 4 digit LED 7 segment display in %.

The indication of the moisture content takes place linear, smallest indicated water percentage 0.5%, corresponds to 4-20mA or 0-10V. In addition optionally 2 relay exits are available. Electrical connection to the supply system must be made with a shielded cable for interference. The device must be installed by specialists. The calibration of the water indicator with display can be made by the start-up locally by the specialists.

Technical Data

Standard length - L	100mm
Optional - L	2000mm max.
Operating temperature	0 to 80°C
Operating voltage	12-30V DC - galvanically isolated
Measurement output	4-20mA
Optional	0-10V
Electric. connection	2 digital relays switching outputs 24V / 4A, 125V / 0,4A
Display	+series terminals 1,5mm ² , tightening torque SEV 0,5Nm max. 7 segment-LED-display in % 3 short-travel keys for menu guidance
Sensor housing	Aluminium 125 x 80 x 57 - IP66
Sensor	Stainless steel
Operating pressure	10bar max.

Technical data



GOLDAMMER
REGELUNGSTECHNIK GMBH

SCHÖLLERSHEIDER STR. 15 PHONE (49) 2104/12093
P.O.BOX 10 02 17 FAX (49) 2104/12028
D-40802 METTMANN www.Goldammer-Regelungstechnik.com
info@goldammer-regelungstechnik.com