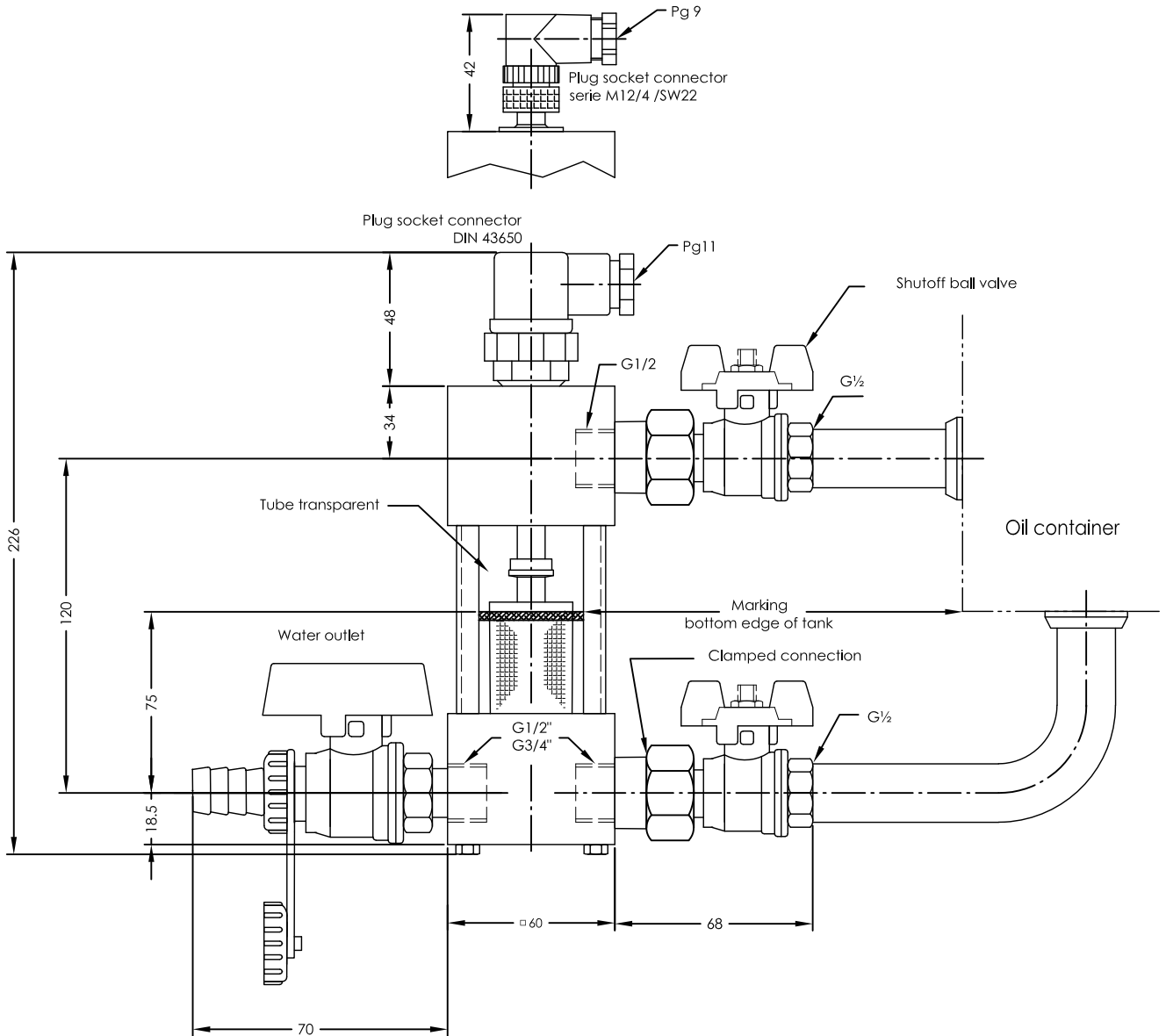


WM 2 - G

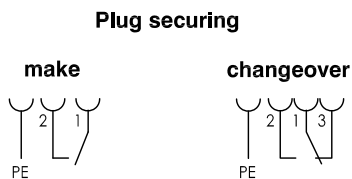
Water indicator

serial No. Date
WM-GB- 704 02/22



Specimen order

WM 2 - G - 0 - KU - W - DIN 43650



Function with increasing level

0= G 1/2 connection

KU= shutoff ball valve, mounted

Plug socket connector
DIN 43650
M12/4

Switching point
S= make
W= changeover

Description

The water indicator is used for the control and regulation of all kinds of liquids and is primarily employed in hydraulic and lubrication oil appliances. This appliance functions according to the principle of separating layer measurement. When the water in the water indicator reaches a level of 30 ml the separating float starts floating and switching a contact (alternatively make or changeover contact).

A visual control through the transparent tube is also possible.

When mounting on the oil container take notice of the marking.

The device must only be installed by specialists.

Max. viscosity 320mm²/S

Technical data

Operating temperature	80°C max.
Operating pressure	6 bar max.
Operating voltage	DIN 43650, 230V max. AC M12/4, 48V max. DC
Current switched	1A max.
Switching capacity	60 W/VA max.
Level contact	Make / changeover
Plug socket connector	DIN 43650 IP65 or serie M12 IP67
Connection	Aluminium
Shutoff valve	Brass
Mounting position	vertical ± 30°
Oil density	S = max. 0,92Kg/dm ³ W = max. 0,88Kg/dm ³



GOLDAMMER
REGELUNGSTECHNIK GMBH

SCHÖLLERSHEIDER STR. 15 PHONE (49) 2104/12093
P.O.BOX 10 02 17 FAX (49) 2104/12028
D-40802 METTMANN www.Goldammer-Regelungstechnik.com
info@goldammer-regelungstechnik.com