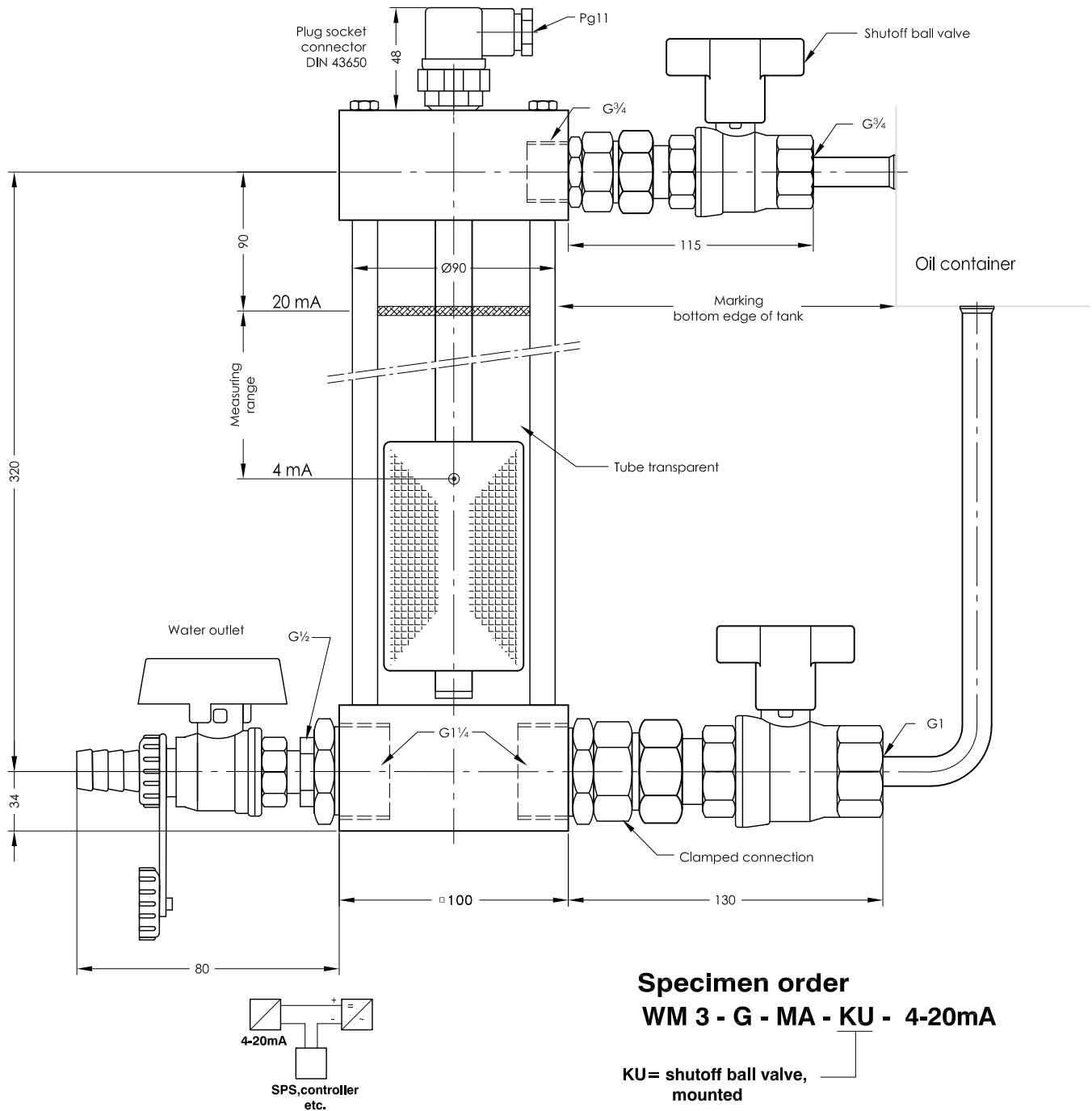


WM 3 - G - MA

Water indicator 4-20 mA

serial No. Date
WM-GB- 707 07/11



Description

The water indicator is used for the control and regulation of all kinds of liquids and is primarily employed in hydraulic and lubrication oil appliances. This appliance functions according to the principle of separating layer measurement. The output signal for oil is 4 mA. An intrusion of water adds buoyancy to the interfacial float, thereby causing a volume - dependent, linear current of 4-20 mA, thus making continuous monitoring of the water increase possible. Electrical connection to the voltage supply and to one or several controllers, stored program controller measuring instruments must be made with a shielded cable for interference-free data signal transmission for all electronic areas. The cable can be of any length.

When mounting on the oil container take notice of the marking.
The device must only be installed by specialists.

Technical data

Operating temperature	80°C max.
Operating pressure	3 bar max.
Operating voltage	12 - 30V DC
Measuring range	4-20 mA
Plug socket connector	DIN 43650 IP65
Connection	Aluminium
Shutoff valve	Brass
Load	RB = U-12V 20mA
Mounting position	vertical $\pm 30^\circ$



GOLDAMMER
REGELUNGSTECHNIK GMBH

SCHÖLLERSHEIDER STR. 15 PHONE (49) 2104/12093
P.O. BOX 10 02 17 FAX (49) 2104/12028
D-40802 METTMANN www.Goldammer-Regelungstechnik.com
Info@goldammer-regelungstechnik.com